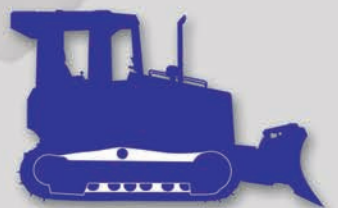




# **Sentry Tires**

*Roll With Us!*



## **PRODUCT INFORMATION CATALOGUE**

**From backhoe tires to skid steer to loader tires,  
Sentry has the right tire and wheel for you.**



**BACKHOE TIRES**



**FORKLIFT TIRES**



**SKID-STEERS TIRES**



**LOADER TIRES**

## Commitment to quality and service

*Sentry Tire and Rubber Inc.*, started producing V-Belts, Conveyor Belts and other rubber accessories back in the 70's. As our manufacturing knowledge and technique matured, we began producing pneumatic OTR tires and solid tires.

Today we are a global company with modern manufacturing facilities in Vietnam, China and Taiwan. With these capabilities, we are able to export a combined total of \$100 million USD annually in all product segments. Our products are sold in over 25 countries worldwide and in all industries such as mining, recycling and other industrial applications.

Supported by our technical and manufacturing expertise, Sentry Tire & Rubber LLC was created in 2005 to help distribute our product in the U.S. With emphasis on quality and service, we strive to bring the two most important attributes U.S. consumers and distributors come to expect. Our team of knowledgeable professionals are dedicated to bringing the best industrial tire product to you. In addition, our engineers continue to find new ways provide product innovations to help our customers work more efficiently with less down time.

We believe that providing an easy to use product to our customer and making it easy for our distributors to sell our product to those customers is our path to success. This is a challenge that we are committed to meet.





# Technology that works for you

## Rubber Technology

- Specially formulated compound allows for maximum resiliency and durability.
- Unique rubber mixing technique allows for customization of rubber to fit your application.

## Wheels That Match

- We will match the wheels to your machines colors.
- We have the right wheels to fits your machine.



## Mold Designed

- Allows a better finish, a better look for your machine.
- Computer controlled curing presses allows for consistent heat distribution throughout the tire.
- Extra deep lugs maximum traction in non-smooth surfaces.
- Deep lugs maximizes tire life.

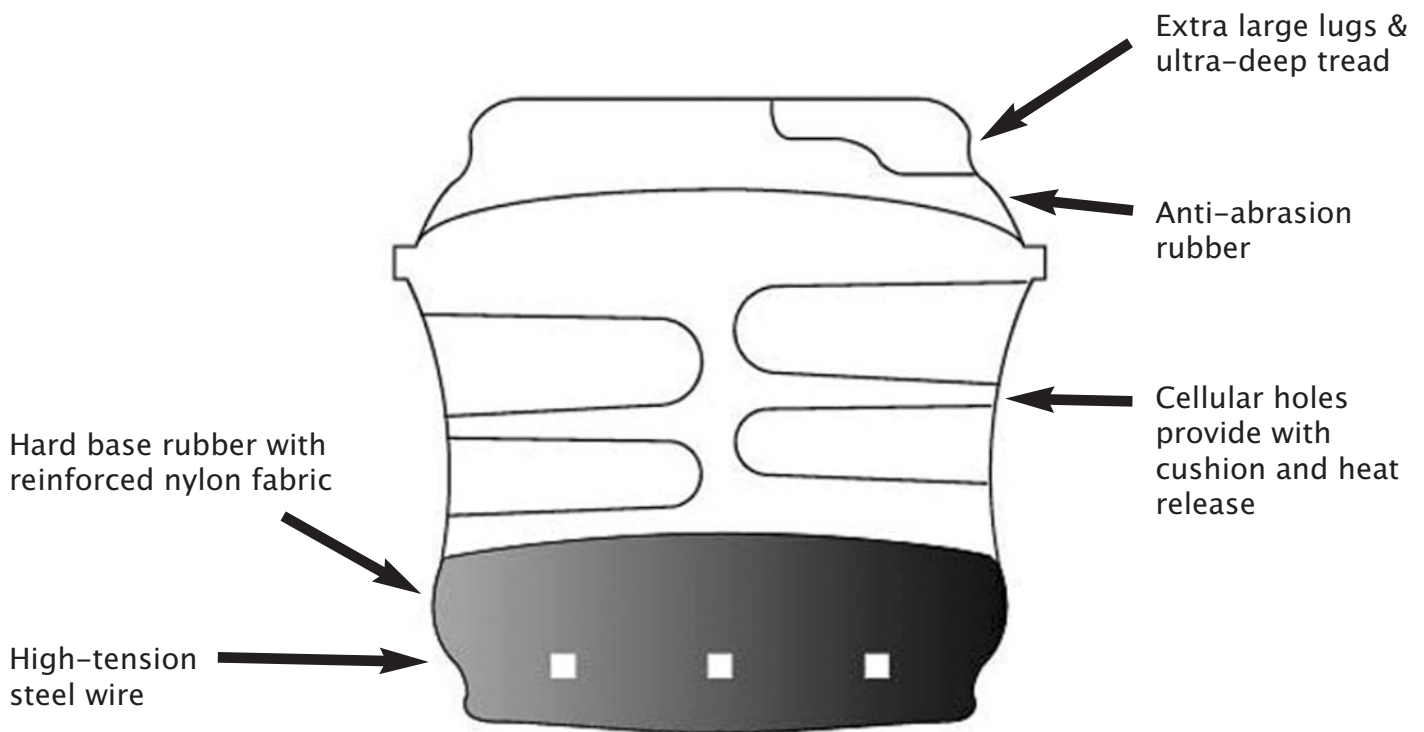
## Deflectors

- Allows tires to absorb higher weight than traditional solids without compromising tire structure.
- Provides better ride to the operator.
- Allows release of heat from the rubber and increase the life of the tire.

## Sentry Guarantee

- ✓ *No Chipping*
- ✓ *No Peeling*
- ✓ *No Chunking*
- ✓ *Tire will not spin on wheels*

## Quality on the inside...





## S Pattern

TIRE SIZE	RIM (inches)	O.D. (inches)	S.W. (inches)	WEIGHT (lbs)	CAPACITY 16MPH (lbs)
3.50-5	2.5/3.25	11.5	3.9	12	1116
4.00-8	2.5/3.0/3.75	16.3	3.8	25	1624
16x5-8	3.5	16.3	4.8	20	2030
16x6-8	4.33	16.4	5.7	34	2414
5.00-8	3.0	17.9	4.7	34	2414
18x7-8	4.33	18.1	6.2	47	3700
6.00-9	4.0	21.1	5.9	62	3200
21x8-9	6.0	21.1	6.9	73	4782
6.50-10	5.0	22.6	6.5	77	4016
23x9-10	6.5	597	208	106	2585
7.50-10	5.5	25.6	7.5	119	4963
7.00-12	5.0	26.3	6.7	107	5053
8.25-12	5.0	28.5	7.0	130	7670
23x10-12	8.0	22.6	9.3	99	6542
27x10-12	8.0	26.0	9.4	157	6621
5.50-15	4.5	26.7	6.0	78	3835
6.00-15	4.5	26.7	6.0	78	3835
7.00-15	5.5/6.0	29.4	6.5	132	6089
7.50-15	5.5/6.0	31.5	7.0	163	6723
8.15-15	6.5/7.0	28.2	8.0	137	7772
250-15	7.0/7.5	25.6	7.5	153	4963
8.25-15	6.5	26.3	6.7	201	5053
300-15	8.0	32.8	10.0	265	9950
28x12.5-15	9.75	28.3	10.8	189	11731
355/65-15	9.75	32.8	13.8	343	13576
7.50-16	5.5/6.0	31.7	7.0	162	5493
8.25-20	6.5	38.6	8.7	268	9024
9.00-20	7.0	38.6	8.7	268	10276
10.00-20	7.0	41.0	9.6	355	11280
11.00-20	7.0/7.5	44.0	10.4	461	12634
12.00-20	8.0/8.5	45.3	11.4	523	14100
12.00-24	8.0/8.5	47.6	11.4	574	16243



## SD Pattern

TIRE SIZE	RIM (inches)	O.D. (inches)	S.W. (inches)	WEIGHT (lbs)	CAPACITY 16MPH (lbs)
6.00-9	4.0	21.1	5.9	62	3200
6.50-10	5.0	22.6	6.5	77	4016
7.00-12	5.0	26.3	6.7	107	5053
7.00-15	5.5/6.0	29.4	6.5	132	6089
8.15-15	6.5/7.0	28.2	8.0	137	7772
8.25-15	6.5	32.4	8.0	201	8234
300-15	8.0	32.8	10.0	265	9950
23.5-25	19.5	63.8	22.8	2273	22000
26.5-25	22.0	69.0	26.4	3135	39600
29.5-25	25.0	73.6	29.1	4092	47000
36/65-33	28.0	80.0	33.5	5214	58000



## YD Pattern

TIRE SIZE	RIM (inches)	O.D. (inches)	S.W. (inches)	WEIGHT (lbs)	CAPACITY 16MPH (lbs)
6.00-9	4.0	21.1	5.9	63	3200
7.00-12	26.3	6.7	106	107	5053



## L Pattern

TIRE SIZE	RIM (inches)	O.D. (inches)	S.W. (inches)	WEIGHT (lbs)	CAPACITY 16MPH (lbs)
5.00-8	3.0	17.9	4.7	37	2414
18x5.5-8	3.50/4.33	18.0	5.5	43	2300
6.00-9	4.0	21.1	5.9	63	3200
6.50-10	5.0	22.6	6.5	64	4016
200/50-10	6.0	18.0	7.5	54	4963
7.00-12	5.0	26.3	6.7	106	5053
8.15-15	6.5/7.0	28.2	8.0	139	7772



## W Pattern

TIRE SIZE	RIM (inches)	O.D. (inches)	S.W. (inches)	WEIGHT (lbs)	CAPACITY 16MPH (lbs)
15X41/2-8	3.0	14.9	4.0	20	1805



## I Pattern

TIRE SIZE	RIM (inches)	O.D. (inches)	S.W. (inches)	WEIGHT (lbs)	CAPACITY 16MPH (lbs)
3.50-5	2.5/3.25	11.5	3.9	13	1116
4.00-8	2.5/3.0/3.75	16.3	3.8	23	1624
15x4-8	3.0	15.0	3.7	15	1173



## VD Pattern

TIRE SIZE	RIM (inches)	O.D. (inches)	S.W. (inches)	WEIGHT (lbs)	CAPACITY 16MPH (lbs)
30x8.5-16	5.5	30.1	7.4	120	4286
30x10-16	6.0/7.0	30.2	9.1	140	4963
32x10-20	7.0	31.8	9.2	141	7220
33x12-20	7.5	7.5/8.0	32.7	10.8	8800





## U Pattern

TIRE SIZE	RIM (inches)	O.D. (inches)	S.W. (inches)	WEIGHT (lbs)	CAPACITY 16MPH (lbs)
30x10-20	6.5/7.0	30.2	9.1	140	4963
31x10-20	6.5/7.0	31.4	9.0	141	7220



## ZD Pattern

TIRE SIZE	RIM (inches)	O.D. (inches)	S.W. (inches)	WEIGHT (lbs)	CAPACITY 16MPH (lbs)
14.00-24	10.0	53.1	14.2	902	29328
14.00-25	10.0	53.1	14.2	906	29328
16.00-25	11.25	59.0	16.5	1290	40608
17.5-25	14.0	52.8	17.3	1062	11280
18.00-25	13.0	63.6	19.3	1960	47376
20.5-25	17.5	59.0	20.5	1547	18048
23.5-25	19.5	63.8	22.8	2167	22560
26.5-25	22.0	63.9	26.4	3360	26890



## OD Pattern

TIRE SIZE	RIM (inches)	O.D. (inches)	S.W. (inches)	WEIGHT (lbs)	CAPACITY 16MPH (lbs)
7.50-16	6.0	31.7	7.0	169	5493
8.25-16	6.0	33	8.25	194	9900



## 750-16

### Tread Characteristics

- Wear resistant traction
- Increased Load Capacity
- Cut resistant

### Recommended Applications

- Asphalt or concrete surfaces
- Tight spaces where machine width is critical

Machine Model*	
Bobcat 700 Series	Bobcat S160
Bobcat S130	Bobcat S175
Bobcat S150	Bobcat S185
Cat 216B	Cat 232B
Cat 226B	
John Deere 240	John Deere 317
John Deere 250	
Komatsu 714	
SK 815	SK 820
SK 818	



## 30x10-16

### Tread Characteristics

- Disposal of mud & water
- Load Capacity
- Traction Ride

### Recommended Applications

- Muddy or dirt surfaces
- Maximum machine width is needed

Machine Model*	
Bobcat 700 Series	Bobcat S160
Bobcat S130	Bobcat S175
Bobcat S150	Bobcat S185
Cat 216B	Cat 232B
Cat 226B	
John Deere 240	John Deere 317
John Deere 250	
Komatsu 714	
SK 815	SK 820
SK 818	



## 32x10-20

### Tread Characteristics

- Disposal of mud & water
- Load Capacity
- Traction Ride

### Recommended Applications

- Muddy or dirt surfaces
- Maximum machine width is needed
- Elevate the machine higher off the ground

Machine Model*	
Bobcat 700 Series	Bobcat S160
Bobcat S130	Bobcat S175
Bobcat S150	Bobcat S185
Cat 216B	Cat 232B
Cat 226B	
John Deere 240	John Deere 317
John Deere 250	
Komatsu 714	
SK 815	SK 820
SK 818	



## 8.15-15 (28x9-15)

### Tread Characteristics

- Wear resistant traction
- Increase Load Capacity
- Cut resistant

### Recommended Applications

- Asphalt or concrete surface
- Tight space where machine width is critical

Machine Model*
Bobcat 500 Series
Case 1840
Mustang 2040

# Skid-Steer/Backhoe Section



**825-15**

## Tread Characteristics

- Disposal of mud & water
- Load Capacity
- Traction Ride

## Recommended Applications

- Asphalt or concrete surfaces
- Tight spaces where machine width is critical

Machine Model*	
Bobcat 853	Bobcat S205
Bobcat 863	Bobcat S220
Bobcat 873	Bobcat S250
Cat 236B	Cat 262B
Cat 246B	Cat 416D
Cat 248B	Cat 902
Cat 252B	Cat Rc-60
John Deere 260	John Deere 320
John Deere 270	John Deere 325
John Deere 304	
SK 1020	
Volvo BL60	



**825-16**

## Tread Characteristics

- Load Capacity
- Traction Ride

## Recommended Applications

- Asphalt or concrete surfaces
- Tight spaces where machine width is critical

Machine Model*	
Bobcat 853	Bobcat S205
Bobcat 863	Bobcat S220
Bobcat 873	Bobcat S250
Cat 236B	Cat 262B
Cat 246B	Cat 416D
Cat 248B	Cat 902
Cat 252B	Cat Rc-60
John Deere 260	John Deere 320
John Deere 270	John Deere 325
John Deere 304	
SK 1020	
Volvo BL60	



**33x12-20**

## Tread Characteristics

- Disposal of mud & water
- Load Capacity
- Traction Ride

## Recommended Applications

- Muddy or dirt surfaces
- Maximum machine width is needed
- Elevate the machine higher off the ground

Machine Model*	
Bobcat 853	Bobcat S205
Bobcat 863	Bobcat S220
Bobcat 873	Bobcat S250
Cat 236B	Cat 262B
Cat 246B	Cat 416D
Cat 248B	Cat 902
Cat 252B	Cat Rc-60
John Deere 260	John Deere 320
John Deere 270	John Deere 325
John Deere 304	
SK 1020	
Volvo BL60	



**36x12-20**

## Tread Characteristics

- Disposal of mud & water
- Good Load Capacity
- Superior Traction

## Recommended Applications

- Muddy or dirt surfaces
- Maximum machine width is needed

Machine Model*	
Bobcat S300	Bobcat S330
John Deere 328	John Deere 332
John Deere 210LE	
Case 570xt	
Cat 416	

\*Machine models listed are for reference only. Please visit your local tire dealer to find the right tire for your machine.



1440 E. Cedar Street  
Ontario, California 91761  
Tel: (909) 230-5552 / Fax: (909) 230-5553

[www.sentrytire.com](http://www.sentrytire.com)